



# Installation Guide

Installation for Retrofit Drain

## Guide d'installation

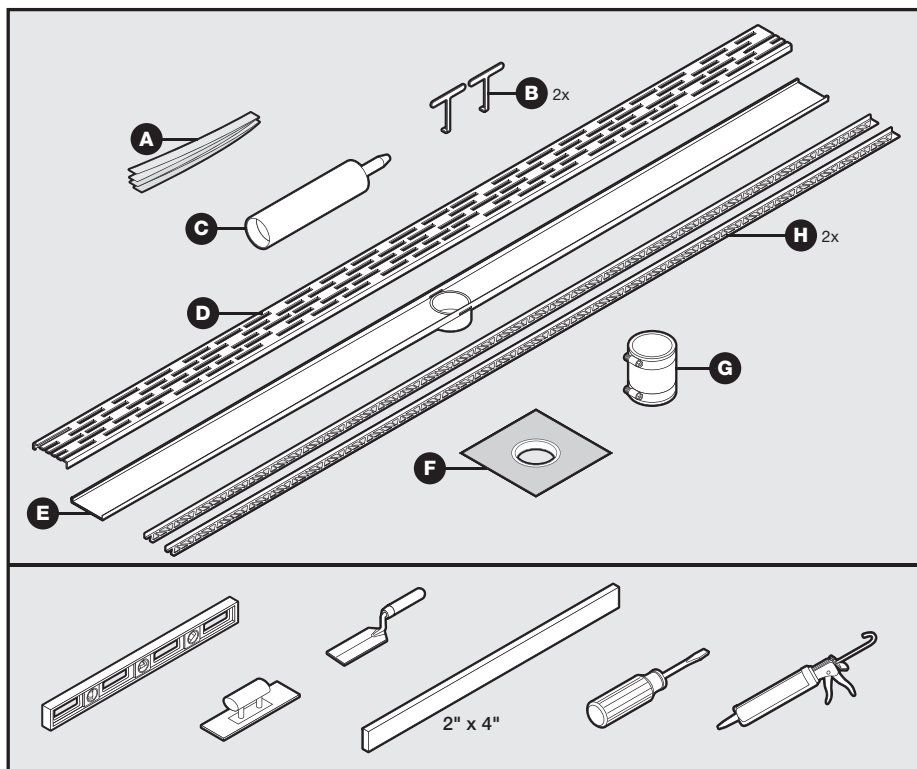
Installation for Retrofit Drain

## Guía de instalación

Installation for Retrofit Drain

Parts, Hardware and Tools Needed / Pièces, matériel et outils exigés /

Piezas, accesorios y herramientas necesarios



**A** Transition Tape / Ruban de transition / Cinta de transición

**B** Cover Removal Key / Cover Removal Key / Cover Removal Key

**C** QDMUS (sealant) / QDMUS (sealant) / QDMUS (sealant)

**D** Drain Cover / Drain Cover / Drain Cover

**E** Drain Body / Corps du drain / Desagüe

**F** Pipe Collar / Pipe Collar / Pipe Collar

**G** No-hub Coupling / No-hub Coupling / No-hub Coupling

**H** Tile Edging / Tile Edging / Tile Edging

**Materials Needed:** thin set, tile, grout.

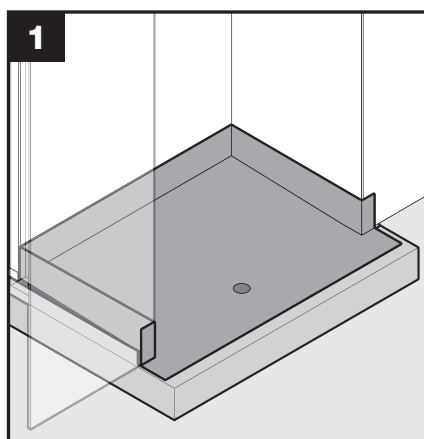
**Matériaux exigés :** additif à pose simplifiée, carrelage, coulis.

**Materiales necesarios:** cemento cola, baldosas/azulejos.

## Important Information / Informations importantes / Información importante

- **DO NOT** grout in cover. Cover must remain removable for maintenance.
- Set drain body level. **DO NOT** follow floor if it is out of level.
- N'appliquez pas de coulis sur la grille. La grille doit être amovible pour l'entretien.
- Réglez le niveau de l'écoulement. **NE** suivez pas le sol si ce dernier n'est pas à niveau.
- **NO** aplique lechada en la cubierta. La cubierta debe permanecer extraíble para el mantenimiento.
- Determine el nivel del cuerpo del drenaje. **NO** siga el piso si está desnivelado.

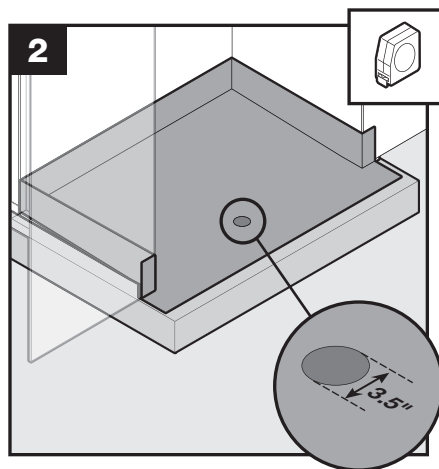
## Site Preparation / Préparation de l'emplacement / Preparación del sitio



Begin installation after slope completion and either topical liquid waterproofing or topical sheet waterproofing have been completed.

Begin installation after slope completion and either topical liquid waterproofing or topical sheet waterproofing have been completed.

Begin installation after slope completion and either topical liquid waterproofing or topical sheet waterproofing have been completed.

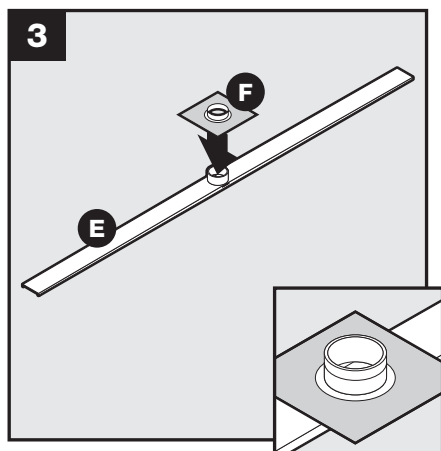


The diameter of the core drill hole for the pipe and no-hub coupling needs to be minimum 3.5".

The diameter of the core drill hole for the pipe and no-hub coupling needs to be minimum 3.5".

The diameter of the core drill hole for the pipe and no-hub coupling needs to be minimum 3.5".

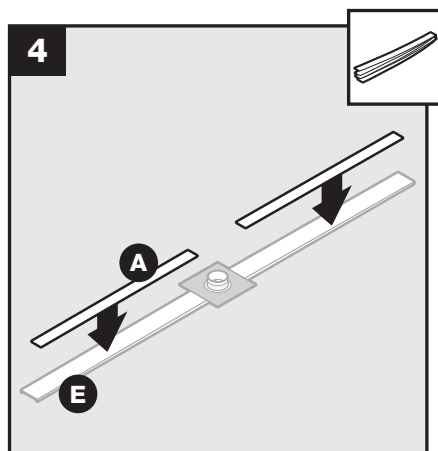
## Drain Preparation / Préparation de l'écoulement / Preparación del drenaje



Cut drain (E) to fit close between walls. Turn drain over and install pipe collar (F) over waste pipe of drain (collar will fit tight).

Cut drain (E) to fit close between walls. Turn drain over and install pipe collar (F) over waste pipe of drain (collar will fit tight).

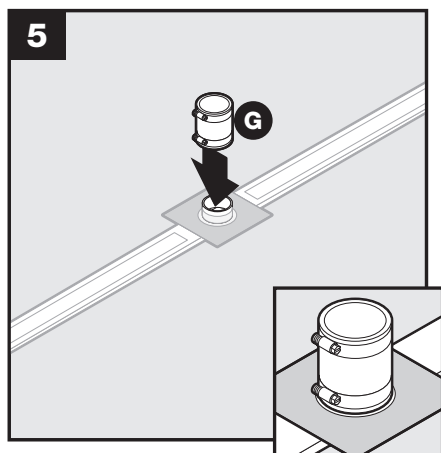
Cut drain (E) to fit close between walls. Turn drain over and install pipe collar (F) over waste pipe of drain (collar will fit tight).



Apply transition tape (A) to the underside of drain body (E).

Apply transition tape (A) to the underside of drain body (E).

Apply transition tape (A) to the underside of drain body (E).

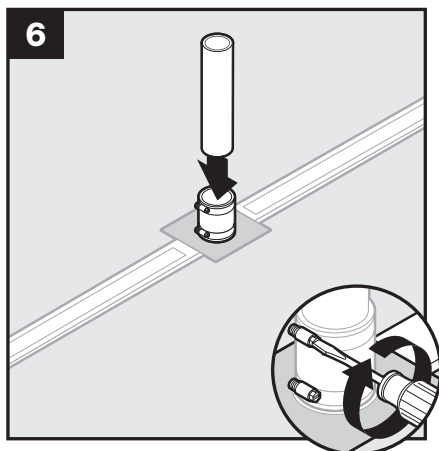


Install no-hub coupling (G) over drain waste pipe and stretched part of pipe collar (it should butt against bottom of drain body).

Install no-hub coupling (G) over drain waste pipe and stretched part of pipe collar (it should butt against bottom of drain body).

Install no-hub coupling (G) over drain waste pipe and stretched part of pipe collar (it should butt against bottom of drain body).

## Drain Preparation (continued) / Préparation de l'écoulement (suite) / Preparación del drenaje (continuación)

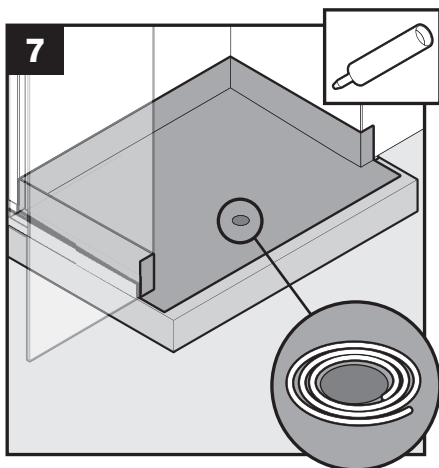


**For installations with waste line connected under the floor,** cut pipe extension (not included) to correct length and attach to the no-hub coupling (tighten both screws on the no-hub coupling).

**For installations with waste line connected under the floor,** cut pipe extension (not included) to correct length and attach to the no-hub coupling (tighten both screws on the no-hub coupling).

**For installations with waste line connected under the floor,** cut pipe extension (not included) to correct length and attach to the no-hub coupling (tighten both screws on the no-hub coupling).

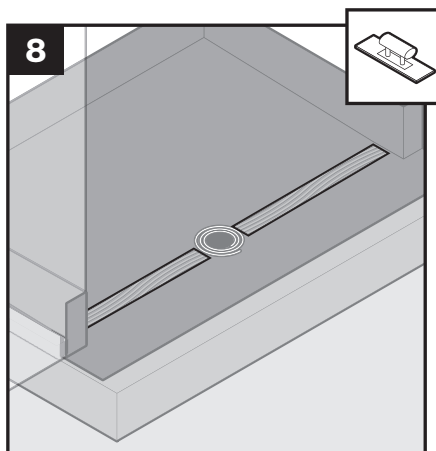
## Drain Body Installation / Installation de l'écoulement intérieur / Instalación del cuerpo del drenaje



Apply QDMUS to waterproofing around waste pipe opening.

Apply QDMUS to waterproofing around waste pipe opening.

Apply QDMUS to waterproofing around waste pipe opening.

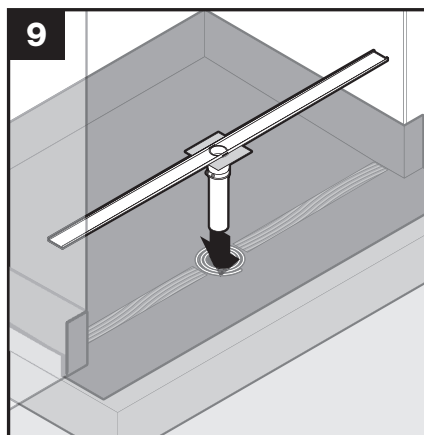


Apply thin set to waterproofing under drain body location (thin set needs to be thicker under the ends of drain body because of taper).

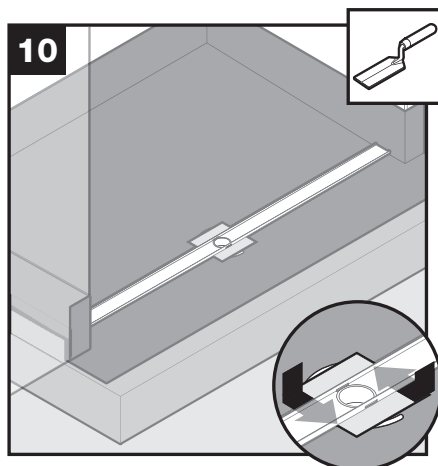
Apply thin set to waterproofing under drain body location (thin set needs to be thicker under the ends of drain body because of taper).

Apply thin set to waterproofing under drain body location (thin set needs to be thicker under the ends of drain body because of taper).

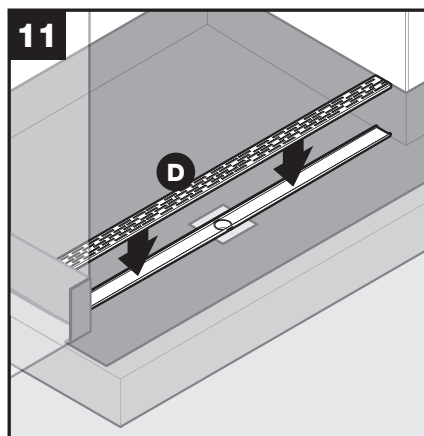
**Drain Body Installation** (continued) / **Installation de l'écoulement intérieur** (suite)  
**/Instalación del cuerpo del drenaje** (continuación)



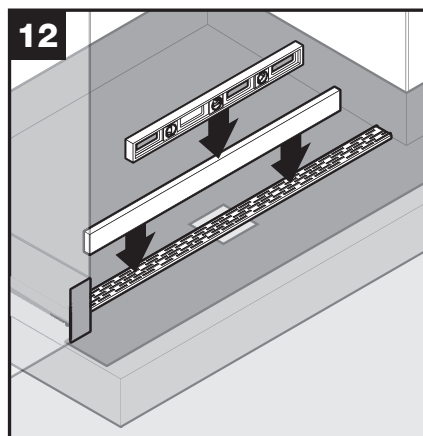
Set drain body assembly into place.  
 Set drain body assembly into place.  
 Set drain body assembly into place.



Press pipe collar into QDMUS with a margin trowel (wipe off excess sealant).  
 Press pipe collar into QDMUS with a margin trowel (wipe off excess sealant).  
 Press pipe collar into QDMUS with a margin trowel (wipe off excess sealant).

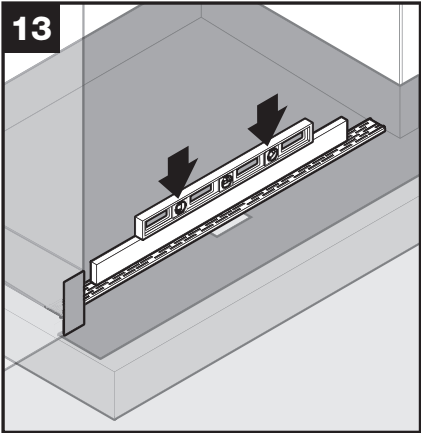


Place drain cover (D) into position.  
 Place drain cover (D) into position.  
 Place drain cover (D) into position.



Place a sturdy level and piece of wood onto top of drain cover.  
 Place a sturdy level and piece of wood onto top of drain cover.  
 Place a sturdy level and piece of wood onto top of drain cover.

**Drain Body Installation** (continued) / **Installation de l'écoulement intérieur** (suite)  
**/Instalación del cuerpo del drenaje** (continuación)

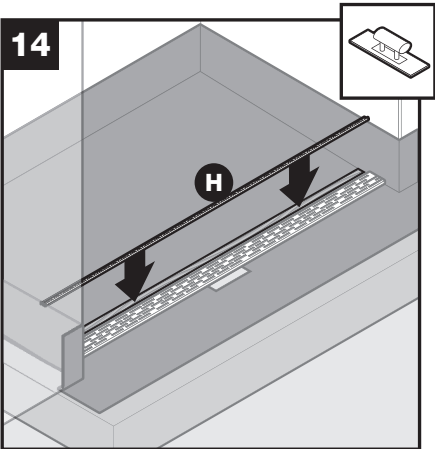


Press entire assembly into thin set (make sure cover is level).

Press entire assembly into thin set (make sure cover is level).

Press entire assembly into thin set (make sure cover is level).

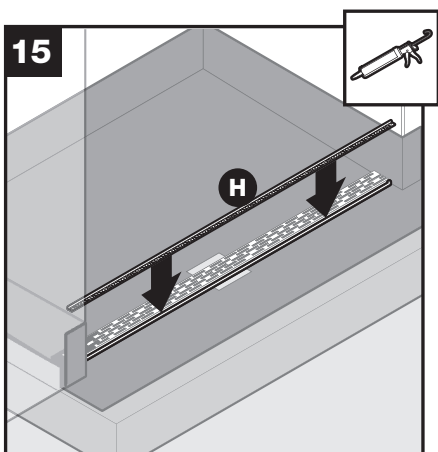
**Final Installation / Installation finale / Instalación final**



Apply thin set to waterproofing and install tile edging on shower side of drain body.

Apply thin set to waterproofing and install tile edging on shower side of drain body.

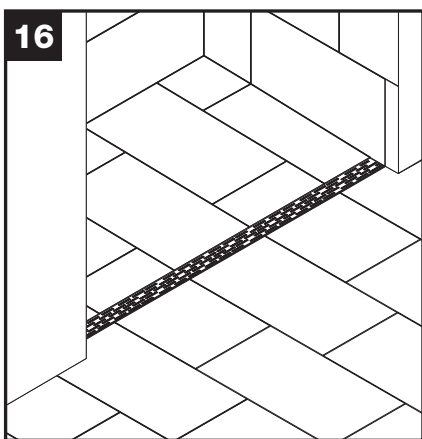
Apply thin set to waterproofing and install tile edging on shower side of drain body.



Apply a bead of sealant on outer side of drain and install remaining tile edging (H) into sealant (make sure sealant and tile edging create a “dam” that spans from vertical waterproofing on one wall to vertical waterproofing on the other wall. There should be no water traveling between the wet and the dry side of tile edging.

Apply a bead of sealant on outer side of drain and install remaining tile edging (H) into sealant (make sure sealant and tile edging create a “dam” that spans from vertical waterproofing on one wall to vertical waterproofing on the other wall. There should be no water traveling between the wet and the dry side of tile edging.

Apply a bead of sealant on outer side of drain and install remaining tile edging (H) into sealant (make sure sealant and tile edging create a “dam” that spans from vertical waterproofing on one wall to vertical waterproofing on the other wall. There should be no water traveling between the wet and the dry side of tile edging.



Set the tiles on sides of drain, bathroom floor and walls. Make sure the trough and cover are perfectly clean after installation. Grout and caulk the entire shower.

Set the tiles on sides of drain, bathroom floor and walls. Make sure the trough and cover are perfectly clean after installation. Grout and caulk the entire shower.

Set the tiles on sides of drain, bathroom floor and walls. Make sure the trough and cover are perfectly clean after installation. Grout and caulk the entire shower.

