

PINNACLE STAIRLIFTS

STEPPING UP YOUR CONFIDENCE AND INDEPENDENCE





Harmar is a leading manufacturer of lifts and is inspired by those who are mobility challenged. Harmar is driven to create mobility and accessibility products that assist people to go where they want, when they want, how they want.

Founded in 1998, Harmar has a proud history of growth by evolving our product lines to enrich the lives of our customers. We provide people with the independence to remain in their home, enjoy their families, and be engaged in their communities. Through innovation we are committed to support people of all ages overcome their limited physical mobility at home and away.



BE INDEPENDENT. BE CONFIDENT. BE INFORMED.



19 million people in the U.S. have disabilities that create problems walking, climbing or descending stairs.



65% of single family and attached homes in the U.S. have 2 or more levels.



Every 11 seconds, an older adult is treated in the emergency room for a fall.

Whether due to an injury or illness, age or ability, the thought of getting up and down a staircase can become a challenge. 19 million people in the U.S. suffer from disabilities that create problems walking, climbing or descending stairs, making it more difficult to stay in the home they love. As more individuals plan to age in place, home access is gaining in importance. Safety and security remain primary concerns, but so are being able to enjoy your life and family.

Homes provide our foundation of happiness: where good times are had and memories are created. Don't let your staircase become an obstacle to your quality of life.

WHAT TO LOOK FOR WHEN PURCHASING

There are many stairlifts to choose from in the marketplace. What makes the Pinnacle different?

- Low maintenance
- Compact
- Helical worm gear and nylon polymer gear rack for a smooth ride and greater stability
- Folding rail design
- Efficient motor that gives extended performance during power loss



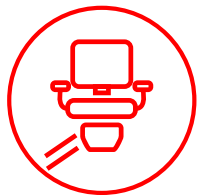
LOW MAINTENANCE

For most people that require a stairlift, performing regular maintenance on their lift presents a challenge. Harmar's Pinnacle is the only stairlift on the market that does not require lubrication due to its nylon polymer gear rack and worm gear.

RAIL SIZE & MOUNTING

Harmar's Pinnacle rail is best in class and sits just 3.5" - 5.5" above the nose of the step. Pinnacle is the most compact stairlift available. The system can be mounted just .5" from the wall and when folded, the entire unit measures 10.5" from the wall. This unparalleled clearance makes it easy for others to pass the lift on the stairs.

THE PINNACLE ADVANTAGE



INDEPENDENT



CONFIDENT



INFORMED

The Pinnacle stairlift provides you with the freedom to go up and down stairs with confidence. It restores independence. It provides peace of mind.

The Pinnacle isn't just a stairlift, it's a quality of life.



Every year, nearly 100,000 people make the decision to invest in a stairlift. Our family was one of them. We wanted the same easy access for our son that other families have without thinking of it.

STANDARD FEATURES



Safety obstruction sensors.



Parts warranty



Swivel seat for a safe exit



Wide footrests for stability and extra comfort.*

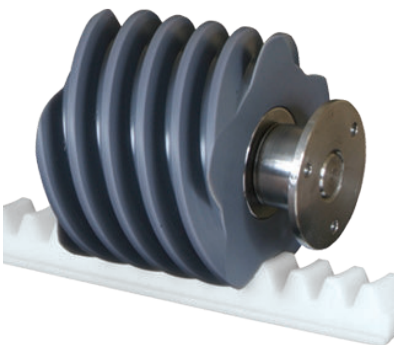
**Wider foot rest vary slightly in style on each Pinnacle model. See model detail for more information.*

PEACE OF MIND BENEFITS



Many stairlifts on the market have 265 lb - 300 lb capacity. While that may be enough for some, there may be need for greater range. More than one family member may need to use the lift.

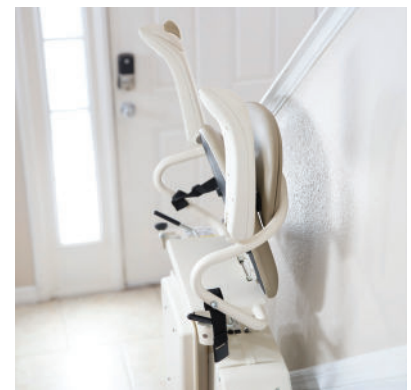
If these concerns are weighing on you, consider Harmar's SL600 and SL600HD. These lifts boast a 350 lb or 600 lb weight capacity.



Oversized helical worm gear with six points of contact for an energy efficient low friction design. That means a smooth ride.



Nylon polymer gear rack with aluminum reinforcement. Lubrication free. That means durability and no track maintenance.



The Pinnacle is the world's most compact stairlift, folding closer to the wall. That means others can pass by easily and more room for you.

FOLDING RAIL ELIMINATES TRIP HAZARD



The Pinnacle Folding Rail deploys automatically to keep walkways clear. This innovative Harman design option eliminates the need to stop and push a button or leave the seat. And its simple mechanical design makes it reliable and minimizes system failures.



All Pinnacles come with two remotes so you may operate your chair without sitting on it, or a second user can call the chair if required.

PINNACLE STAIRLIFT SPECIFICATIONS

	350 lb	600 lb	300 lb
	Patented nylon polymer gear rack Helical worm gear	Patented nylon polymer gear rack Helical worm gear	Patented nylon polymer gear rack Helical worm gear
	20 FPM	14 FPM	20 FPM
	17.5" x 17"	17.6" x 17"	16.5" x 9.5" Adjustable 1" up or down
	19" x 16"	18.5" x 14"	19" x 16"
	10 1/2" from wall 13.6" with folding rail	17" from wall	11" from wall 13.6" with folding rail
	15'6" to 70'	15'6" to 40'	15'6" to 36'
	24V DC	24V DC	24V DC
	27° to 52°* * inclines above 45° may require local jurisdiction approval.	27° to 48°* * inclines above 45° may require local jurisdiction approval.	27° to 52°* * inclines above 45° may require local jurisdiction approval.



1500 Independence Blvd., Suite 220

Sarasota, FL 34234

800-833-0478

Harmar.com

*Images used for this brochure are for illustrative purposes only, please refer to local code for specific configuration requirements.