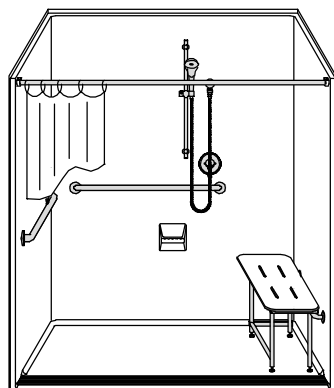


# MODEL: LSS26337A75FTB.V3\*

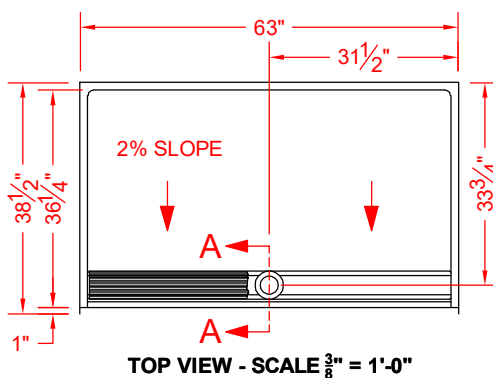
\*ALL ACCESSORIES OPTIONAL



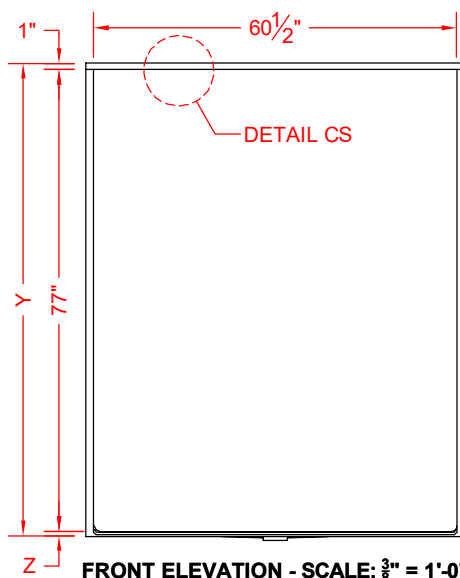
SEE OVER



**PERSPECTIVE VIEW - N.T.S.**  
**MODEL SHOWN HERE AS:**  
RIGHT PLUMBING  
RIGHT SEAT



**TOP VIEW - SCALE  $\frac{3}{8}$ " = 1'-0"**



**FRONT ELEVATION - SCALE:  $\frac{3}{8}$ " = 1'-0"**

## Features:

- ADA compliant single-piece roll-in shower with trench drain and stainless steel grate (included)
- Molded, one-piece gelcoat/fiberglass shower module
- "Smooth" wall finish, white (standard)
- Integral full wood backing for strength and unlimited accessory placement
- Available in various threshold heights
- On all threshold heights 1-1/2" or taller, no mud set is required
- On all threshold heights 1-1/4" or shorter, no mud set is required, but an adhesive kit is supplied

## \*OTHER THRESHOLD HEIGHTS AVAILABLE UPON REQUEST

| MODEL #           | UNIT THRESHOLD HEIGHT |          |
|-------------------|-----------------------|----------|
|                   | Y                     | Z*       |
| LSS26337A75FTB.V3 | 78-3/4"               | 3/4" MIN |
| LSS26337A2FTB.V3  | 80"                   | 2" MAX   |

\* - SEE BACK FOR DETAIL SECTIONS

## PRODUCT SPECIFICATIONS:

- Single-piece shower module shall be constructed of gelcoat/fiberglass with full integral plywood backing and have a stainless steel trench drain grate
- Rough-In: Stud opening +1/4" – 0" Nominal Dimensions

C.S.I. FORMAT SPECIFICATION TEXT AVAILABLE

## PRODUCT INFORMATION:

- Accessories: Factory installed, unless prone to damage during installation/shipping. Polished chrome/satin stainless standard, others available. (not applicable to pans/bases)
- Colors: White as standard, others to match any major fixture manufacturer, also available with sprayable solid surface in many colors

## OPTIONAL ACCESSORIES:

### INSTALLED AT FACTORY:

- Seat, folding
- Grab bar
- Soap dish
- Mixing valve, pressure-balancing, lever handle, pre-plumbed tree to supply elbow
- Curtain rod brackets

### INSTALLED BY OTHERS:

- Curtain and rod
- Flange-window trim kits
- Trench grate and No-caulk brass drain (INCLUDED)

## CODES:

Designed and manufactured in compliance with the following standards and codes:

- ANSI Z124.2 Standards for Plastic Shower
- ADA Accessibility Guidelines for Buildings and Facilities
- ANSI A117.1 A - Accessible and Usable Buildings and Facilities
- ANSI A117.1 B - Accessible and Usable Buildings and Facilities
- IPC International Plumbing Code
- UPC Uniform Plumbing Code

## NOTICE OF LIMITATION:

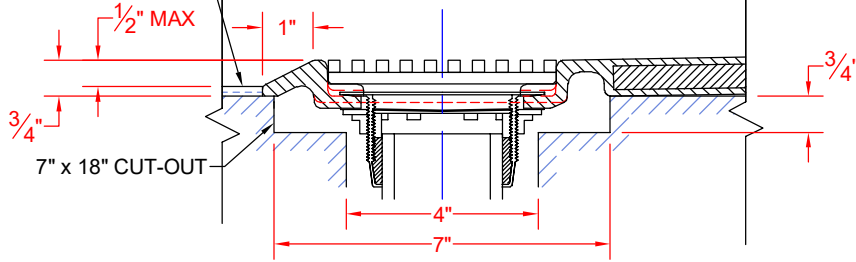
- Recess as needed for trench; see page 2
- Recess as needed to meet code
- Adhere to floor as required



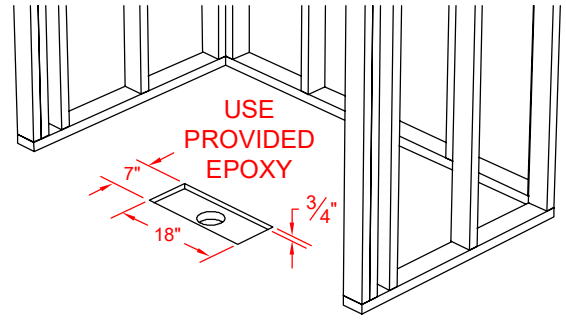
*We reserve the right to make revisions without notice in the design of fixtures or in packaging unless this right has specifically been waived at the time the order is accepted.*

## **LSS26337A75FTB.V3**

BUILD UP OR RECESS  
TO MEET CODE



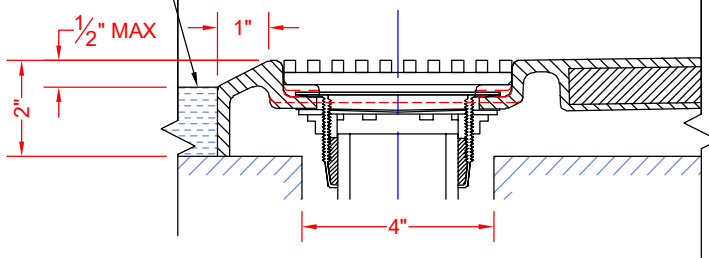
**SECTION A-A - SCALE: 3" = 1'-0"**



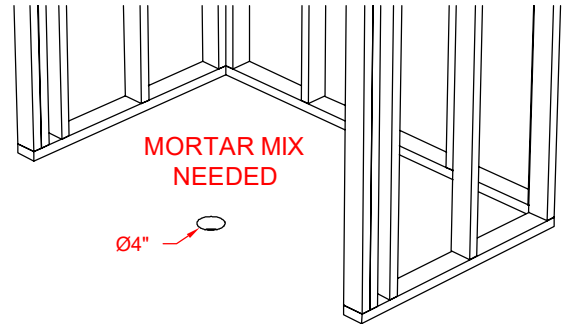
FOR MODELS ENDING IN A75FT\*.V3,  
INSTALLATION REQUIRES A 7" x 18" x 3/4" CUT-OUT.

## **LSS26337A2FTB.V3**

BUILD UP OR RECESS  
TO MEET CODE

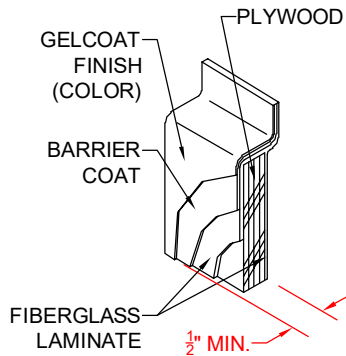


**SECTION A-A - SCALE: 3" = 1'-0"**



FOR MODELS ENDING IN A15FT\*.V3, A17FT\*.V3, OR A2FT\*.V3,  
INSTALLATION REQUIRES A 4" DRAIN HOLE.

**\*\*OTHER THRESHOLD HEIGHTS AVAILABLE UPON REQUEST\*\***



**DETAIL CS - SCALE: N.T.S.**  
**CROSS SECTION DETAIL**