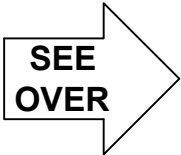
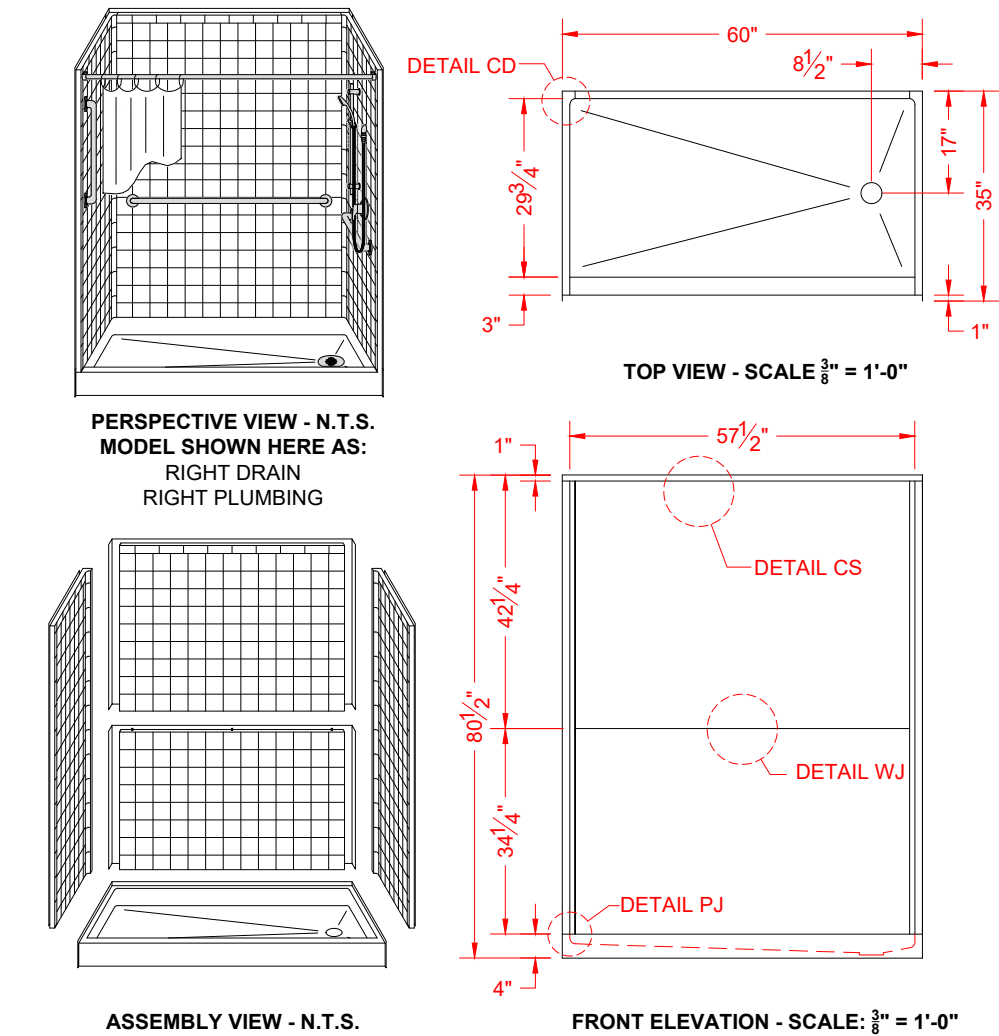


MODEL: 5LRS6034FB.V2* L/R

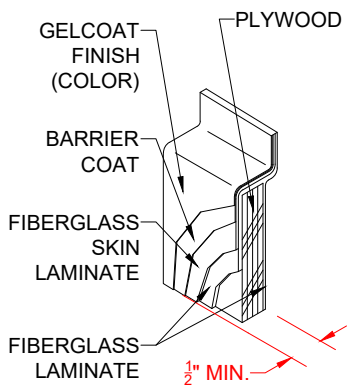
REMODELER

*ALL ACCESSORIES OPTIONAL

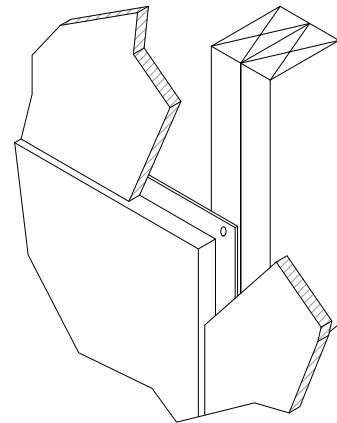


- Features:**
- Molded, five-piece gelcoat/fiberglass shower module
 - "RealTile" wall finish, white (standard)
 - Integral full wood backing for strength and unlimited accessory placement
 - Flat upper back wall to avoid interference for window trim kits, grab bars, etc.

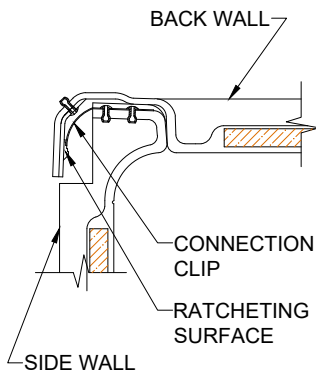
<p>PRODUCT SPECIFICATIONS:</p> <p>-Multi-piece shower module shall be constructed of gelcoat/fiberglass with full integral plywood backing</p> <p>-Rough-In: Stud opening +1/4" -0" Nominal Dimensions.</p> <p>C.S.I. FORMAT SPECIFICATION TEXT AVAILABLE</p>		
<p>PRODUCT INFORMATION:</p> <p>-Accessories: Polished chrome/satin stainless standard, others available.</p> <p>-Colors: White as standard, others to match any major fixture manufacturer, also available with sprayable solid surface in many colors</p>	<p>ACCESSORIES:</p> <p><u>INSTALLED BY OTHERS:</u></p> <ul style="list-style-type: none">-Seat, folding-Grab bar-Soap dish-Mixing valve, pressure-balancing, lever handle, pre-plumbed tree to supply elbow-Curtain rod brackets-Curtain and rod-Flange-window trim kits-No-caulk brass drain	<p>CODES:</p> <p><u>Designed and manufactured in compliance with the following standards and codes:</u></p> <ul style="list-style-type: none">-ANSI Z124.2 Standards for Plastic Showers-ANSI A117.1 B - Accessible and Usable Buildings and Facilities-IPC International Plumbing Code-UPC Uniform Plumbing Code
		<p>NOTICE OF LIMITATION:</p>
<div><div></div><div><p>We reserve the right to make revisions without notice in the design of fixtures or in packaging unless this right has specifically been waived at the time the order is accepted.</p></div></div> <div>page 1 of 2</div>		



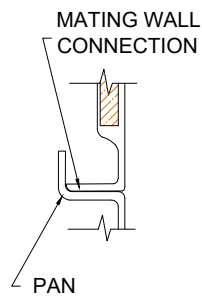
DETAIL CS - SCALE: N.T.S.
CROSS SECTION DETAIL



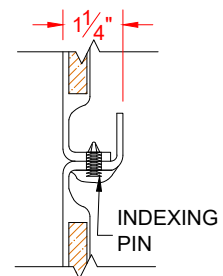
DETAIL DD - SCALE: N.T.S.
DRYWALL DETAIL



DETAIL CD - SCALE: 3" = 1'-0"
CORNER DETAIL



DETAIL PJ - SCALE: 3" = 1'-0"
PAN JOINT DETAIL



DETAIL WJ - SCALE: 3" = 1'-0"
WALL JOINT DETAIL