

REMODELER



**SEE
OVER**

- Molded, three-piece gelcoat/fiberglass corner shower module
- "Subway Tile", 4" x 8" simulated tile wall finish, white (standard)
- Integral full wood backing for strength and unlimited accessory placement
- Flat back wall to avoid interference for window trim kits, grab bars, etc.

*** - SEE BACK FOR DETAIL SECTIONS**

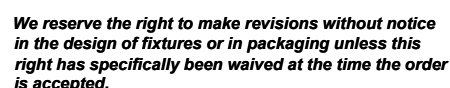
-Multi-piece shower module shall be constructed of gelcoat/fiberglass with full integral plywood backing
-Rough-In: Stud opening +1/4" -0" Nominal Dimensions.

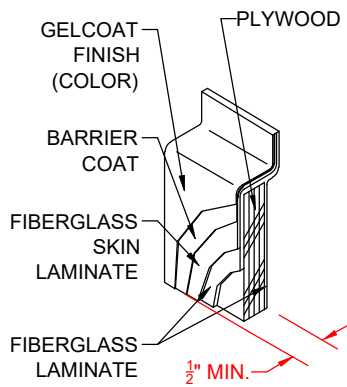
-Accessories: Polished chrome/satin stainless standard, others available.
-Colors: White as standard, others to match any major fixture manufacturer, also available with sprayable solid surface in many colors

- Grab bar
- Soap dish
- Mixing valve, pressure-balancing, lever handle, pre-plumbed tee to supply elbow
- Corner curtain rod kit and full-sized curtain
- No-caulk brass drain

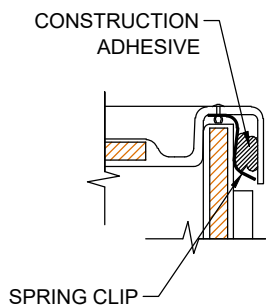
- ANSI Z124.2 Standards for Plastic Showers
- IPC International Plumbing Code
- UPC Uniform Plumbing Code

- Adhere to floor as required

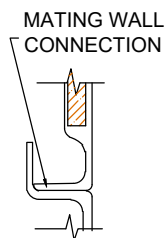




DETAIL CS - SCALE: N.T.S.
CROSS SECTION DETAIL



DETAIL CD - SCALE: 3" = 1'-0"
CORNER DETAIL



DETAIL PJ - SCALE: 3" = 1'-0"
PAN JOINT DETAIL