



AQUATIC ACCESS[®]

ADA-Compliant

Meets newest **Americans With Disabilities Act** guidelines

INDEPENDENT OPERATION

Upper and lower controls at deck and water levels

AUTOMATIC 180° SEAT TURN

Accommodates side wheelchair transfers

WATER-PRESSURE POWERED

Water line or garden hose connection

No electricity or pump required

LIFTS 400 LBS. AT 55-65 PSI

A static pressure measurement taken at faucet with no water flowing may have to be approx. 10% higher to achieve rated load

ADJUSTABLE SEAT HEIGHT

INSTALLS IN DECK SOCKET

No underwater installation - cylinder bottom touches pool wall

Safe for vinyl liners with optional pad

PORTABLE

Lifts out of socket - no tools required - rolls on wheel

CAN BE PADLOCKED

Seat can be locked in raised position with water off

FLIP-UP FOOTREST

Cushioned for safety in and out of water

FIVE YEAR WARRANTY

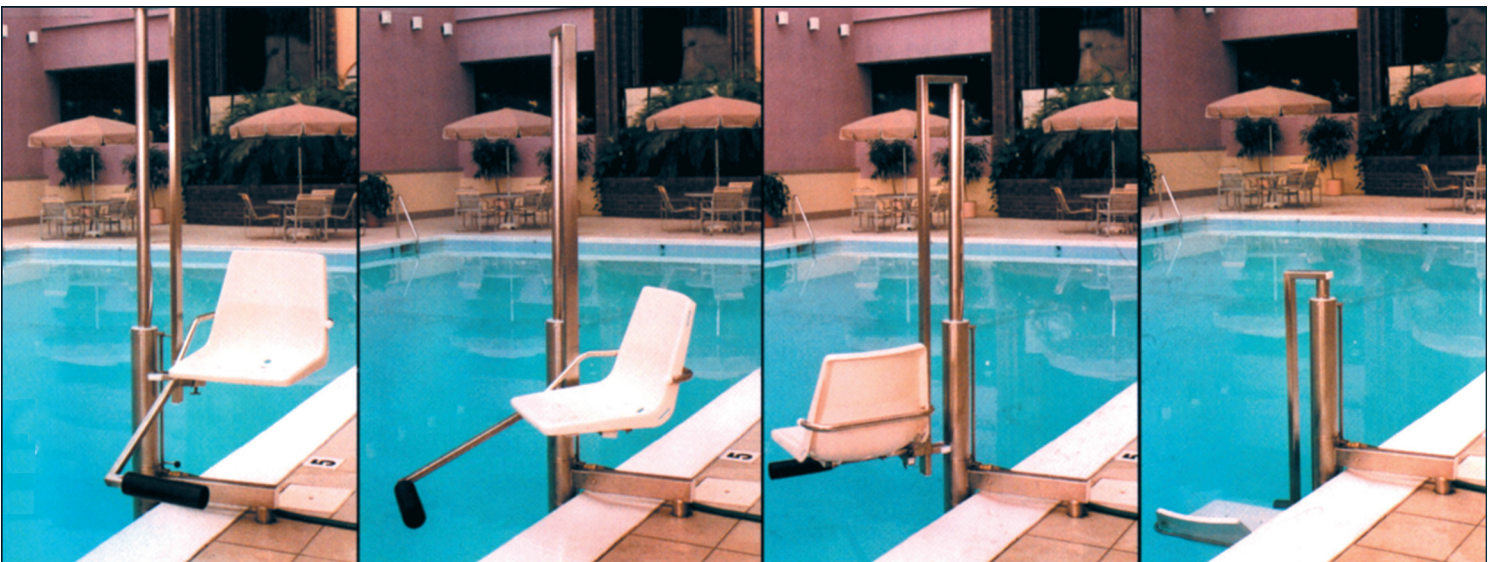
All structural components covered, including cylinder

One year warranty on valves, seals, hoses, headrests

POOL LIFT Model IGAT-180



U.S. PATENT #5,465,433



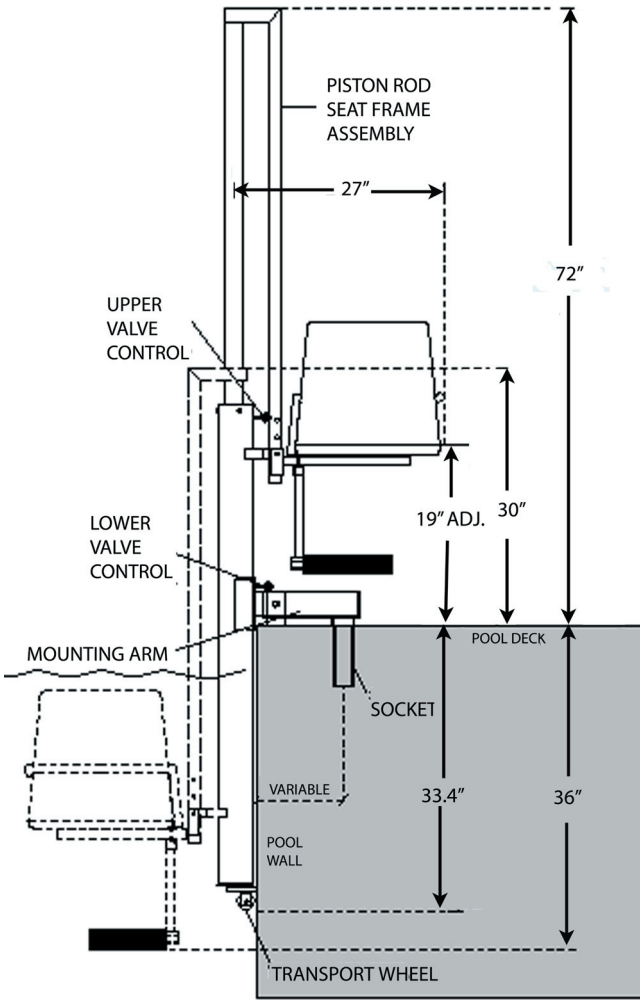
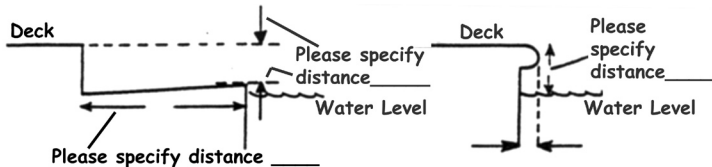
PH 800.325.5438 502.425.5817 FAX 502.425.9607 417 Dorsey Way, Louisville, KY 40223 USA www.AquaticAccess.com

POOL LIFT MODEL IGAT-180

INSTALLATION should be where there is a straight wall at least 36" deep before any curve at pool bottom. Socket location is usually 15"-21" from pool edge. This measurement is variable depending on pool configuration. A 3" min. diameter core hole is drilled 8" deep, and the 2 3/8" O.D. socket is anchor-cemented into the deck. A socket hole cover is included.

WATER CONNECTION may be as simple as connecting a garden hose to a nearby faucet. On new construction, an in-ground water line may be installed to a recessed water box with a shut-off valve (available from plumbers supply) to eliminate the hose on deck. The pressure requirement at hose connection is approx. 10% higher than operating pressure requirement to achieve our rated load. Static water pressure (measured at faucet or hose with no water flowing) is affected by variables in the material, length, diameter, and rigidity of the water lines and hoses from the street to the lift, and by other faucets being open at the same time. Operating pressure requirement (measured while lifting) is not affected by these variables.

DRAWING REQUIRED with each order to show relation of deck coping, gutter, and pool wall, with pertinent measurements. Download a Dimensional Worksheet from www.AquaticAccess.com or call and have one faxed or mailed to you. Examples:



ACCESSORIES

STANDARD:

Right arm on seat, no left arm, flip-up footrest, socket and socket cover, white seat; clockwise rotation into pool, counter-clockwise exiting pool

OPTIONAL:

Optional accessories may increase total weight and water pressure required to achieve rated load.

Seat belts - lap and chest locations, white (shown in lap position at right)

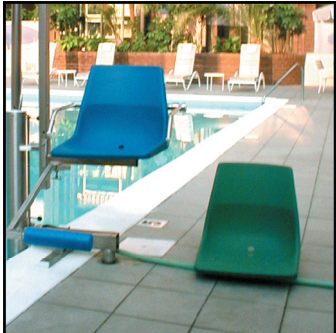
Vinyl-liner pool wall pad - prevents rubbing on liner (not shown)

Headrest - soft, full support, adjustable height, white

Flip-up left arm (shown above in raised position)

Rescue Board Attachment - must be ordered at same time as pool lift

Seat Color - blue, green (shown at right), white (standard)



CUSTOM DESIGNS

and customization of our standard lifts are offered to fit your needs. Changes may include: heavy-duty models with a higher weight capacity, larger diameter cylinders for low water pressure situations, opposite or reduced seat rotation, longer travel for low water level, other seat heights, sling seats, or modifications for recessed spas with bench seats.